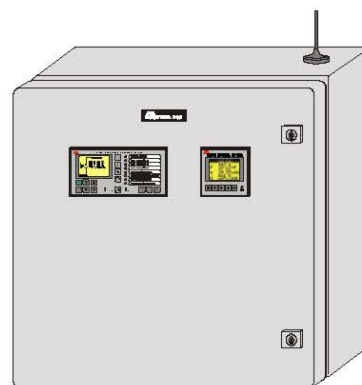




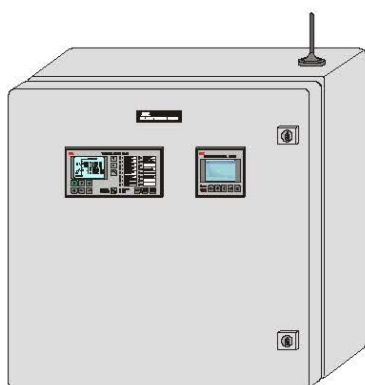
Remote Terminal DT-10SE for remote control of the solar power plant (up to 30 kW) connection to the low voltage distribution grid

- dimensions 300 x 400 x 210 mm



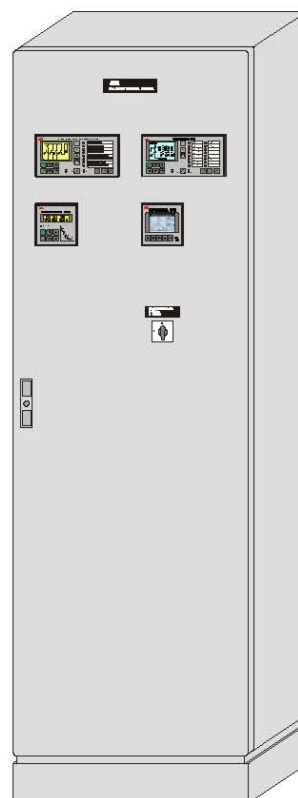
Remote Terminal DT-10SE for remote control of the solar power plant (up to 500 kW) connection to the low voltage distribution grid

- dimensions 600 x 600 x 350 mm



Remote Terminal DT-10SE for remote control of the solar power plant connection to the medium voltage distribution grid

- dimensions 600 x 600 x 350 mm



Remote Terminal DT-10SE for remote control and power quality control of the solar power plant connection to the medium voltage distribution grid

- dimensions 600 x 1900 x 400 mm

